

Energy Management Solutions  
Liquid Energy Specialists

# Large Scale Storage Solutions

## Your Liquid Energy Solutions Overview

Available from 9000 to 28 000 litres



Keeping your  
Business Growing



[kingspanenergymanagement.com](http://kingspanenergymanagement.com)



# Growing through Partnership

## Kingspan

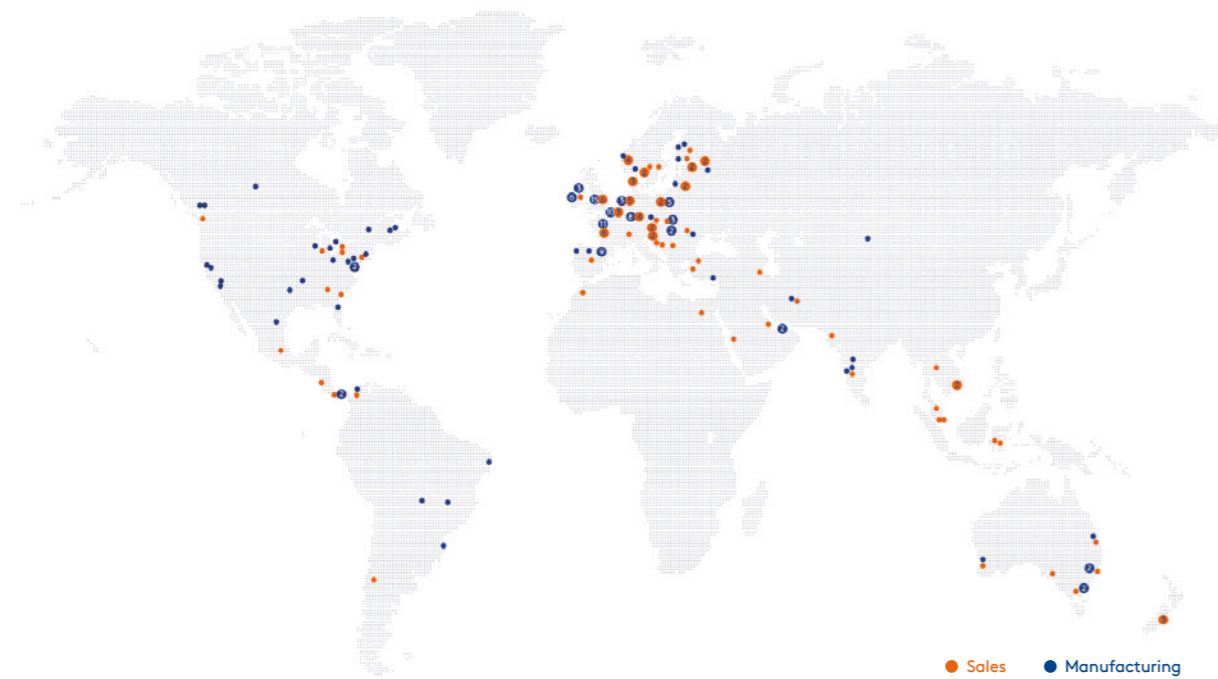
The Kingspan group is a dynamic, diverse business, with a global reach. We are the global leader in high performance insulation and building envelope solutions. Improving building performance, construction methods and ultimately people's lives - that's what drives our teams across the world.

Operating in over 80 countries, we deliver pioneering technology, design and manufacturing, backed by a worldwide distribution network and local experienced sales and customer service teams.

As a global leader, we understand your requirements and are driven to design and deliver innovations that exceed your expectations, again and again.

Kingspan brings you the confidence of quality and support over the lifetime of your product and beyond.

Our comprehensive portfolio of energy management solutions will meet all your business's fertiliser, water, diesel, AdBlue® and agri storage needs.



212

Manufacturing Facilities

+22 000

Employees Globally

+80

Countries

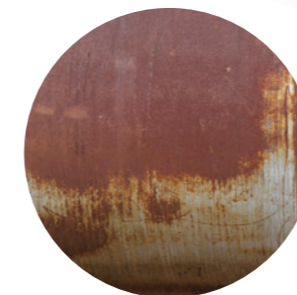
6

Business Divisions

● Fertilizer  
Single Skin Tanks

● AdBlue®  
Single Skin Tanks

● Water  
Single Skin Tanks



Steel Tank construction  
corrodes over time

## Key Points



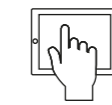
**Superior, Flexible Construction**  
One solid piece – not welded, glued or combined. Superior impact resistance to GRP



**Purity**  
High quality, virgin Polyethylene guarantees strength and durability



**Peace of Mind**  
10 year guarantee\* on the tank and 2 years on equipment



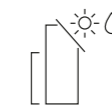
**Smart Monitoring (where fitted)**  
Product levels monitored and available 24/7, options to keep in control locally or through the Kingspan Connect platform



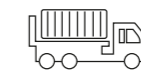
**Corrosion Free**  
No unsightly rust or degradation of storage like with steel



**Maintenance Free**  
No repainting, contamination risk, leakage or other issues



**Weatherproof**  
Resistant to harsh weather conditions, and are UV stabilised



**Easily transported**  
Designed to fit into regular transport options to decrease cost\*\*



**Easy Installation**  
Easily installed and moved (when drained) with existing farm equipment. Free standing, no tie down options available



**Trustworthy Quality**  
Manufactured to ISO 9001:2015 certified standards



\*5 years warranty on 9000 and 15 000 l tanks. The warranty is subject to the product being used in accordance with the manufacturer's instructions.  
\*\* except 15 000 L (N) product version

# AgriMaster S®

The complete Liquid Fertilizer storage tank range is available with single-skinned construction.

## AgriMaster S® Equipment options 9000 - 28 000 Litre

**AgriMaster S® - Single Skin Tanks**  
Capacity: 9000 L, 15 000 L, 22 000 L, 28 000 L

- > Access lid 22" (16" in 9000 L tank)
- > 2" (or 3") bottom outlet fitted with stainless steel ball valve
- > 2" (or 3") offset filling connection in 9000 L and 15 000 L tank
- > Ventilation outlet

**AgriMaster S® - Single Skin Tanks**  
Capacity: 22 000 L, 28 000 L

- > Access lid 22"
- > 2" (or 3") bottom outlet fitted with stainless steel ball valve
- > Ventilation outlet
- > Filling line at working level (optional)



## Model Selector

The dimensions given are approximate. The differences result from the production technology and method of use of the product.

AgriMaster S® - Single Skin Tanks						
Capacity		9000 litres	15 000 litres (N)	15 000 litres	22 000 litres	28 000 litres
Dimensions	Diameter	2300 mm	2950 mm	2350 mm	2480 mm	2480 mm
	Diameter	2900 mm	2750 mm	4180 mm	5265 mm	6258 mm

Product Codes					
2" ball valve	0282001	0280001	1054901	0670015	0670017
3" ball valve	0282002	0280002	-	0670035	0670037
2" ball valve + GSM	-	0280016	-	0670055	0670057
3" ball valve + GSM	-	0280017	-	0670075	0670077
2" ball valve + filling line	-	-	-	0670115	0670117
3" ball valve + filling line	-	-	-	0670135	0670137

# AquaBank®

Your best solution for water storage.

## AquaBank® Equipment options 15 000 - 28 000 Litre

### Single Skin Tanks

- > Access lid 22"
- > 2" bottom outlet fitted with plated brass ball valve
- > Ventilation outlet



## Model Selector

The dimensions given are approximate. The differences result from the production technology and method of use of the product. AquaBank® tanks are not designed for the drinking water storage.

AquaBank® - Single Skin Tanks					
Capacity		15 000 litres (N)	15 000 litres	22 000 litres	28 000 litres
Dimensions	Diameter	2950 mm	2350 mm	2480 mm	2480 mm
	Height	2750 mm	4180 mm	5265 mm	6258 mm

Product Codes				
2" ball valve	0600400	1054910	0672001	0672003
3" ball valve	0600401	-	0672011	0672013

# BlueMaster®

The complete AdBlue® storage tank range is available with single-skinned construction.

## BlueMaster® Equipment options 9000 - 28 000 Litre

### Single Skin Tanks

Capacity: 9000 L, 15 000 L, 22 000 L, 28 000 L

- > Access lid 22" (16" in 9000 L tank)
- > 2" (or 3") bottom outlet fitted with stainless steel ball valve
- > 2" (or 3") offset filling connection in 9000 L and 15 000 L tank
- > Ventilation outlet

### Single Skin Tanks

Capacity: 22 000 L, 28 000 L

- > Access lid 22"
- > 2" bottom outlet fitted with stainless steel ball valve
- > Ventilation outlet
- > Filling line at working level (option)



## Model Selector

The dimensions given are approximate. The differences result from the production technology and method of use of the product.

BlueMaster® - Single Skin Tanks						
Capacity		9000 litres	15 000 litres (N)	15 000 litres	22 000 litres	28 000 litres
Dimensions	Diameter	2300 mm	2950 mm	2350 mm	2480 mm	2480 mm
	Height	2900 mm	2750 mm	4180 mm	5265 mm	6258 mm

Product Codes					
2" ball valve	-	0280005	-	0670095	0670097
2" ball valve + filling line	-	-	-	0670165	0670167

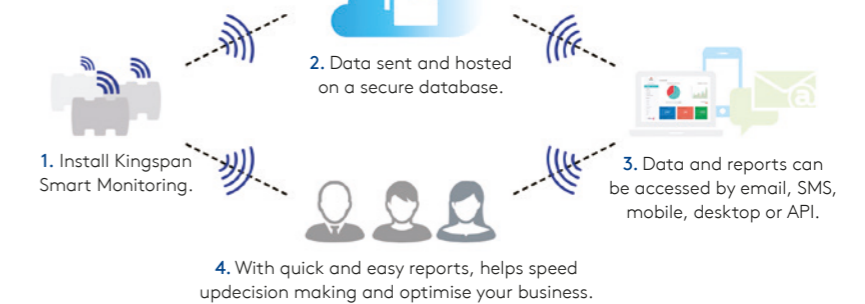
# Smart Monitoring

Award Winning Monitoring Solutions for Liquid Energy.

**Kingspan Connect**  
The world's most cost-effective remote telemetry reporting platform



### How Kingspan Connect works:



## Watchman® Flo

Intelligent flow measurement and full app-based device control

### Features:

- > Notification of leakage, overfilling and low liquid level
- > Access to cloud-based software on the Kingspan Connect platform and Kingspan Connect mobile app
- > Control of the automatic filling handle
- > Liquid status indication displayed in: 'litres', 'cm' and '%'
- > Buzzer: (93 dB) internally mounted
- > Fuelling memory (max. 10 entries)
- > GSM and Wi-Fi connection available
- > Compatible with ultrasonic sensor Watchman® Sonic Plus Advanced

## Watchman® Radar

Radar precision technology - no drilling necessary, for any stored liquid or solid substances

### Features:

- > Measurement via radio microwaves
- > Monitoring of tanks up to a height of 6 m
- > Fast and simple installation without drilling (in a plastic tank)
- > Full control via Kingspan Connect mobile app
- > Access to consumption and substance level data at any time, from any location
- > Built-in gyroscope ensuring 100% measurement accuracy
- > Minimum 5 years of battery life thanks to NB-IoT connectivity
- > Quick setup via dedicated mobile app
- > GPS monitoring of tank location - including mobile tanks
- > Precision measurement up to 1 cm - monitoring of liquids and solids stored in any tank

## Watchman® LT

Precise and non-contact measurement for local tank level monitoring, developed by combining modern ultrasonic technology with advanced algorithms

### Features:

- > The narrow measuring beam enables installation close to the tank walls
- > Short dead band not covered by the measurement
- > Long lifetime of a product
- > Sensor protection in compliance with standard IP68
- > PVDF housing resistant to chemicals and acids
- > 99.8 % measurement accuracy even in demanding environmental conditions

## Watchman® WAPex

Precise telemetry system for remote GSM tank monitoring

### Features:

- > Measurement of liquid level and tank capacity
- > Very quick installation
- > Works with Watchman® LT or pressure probe
- > Optional GPS
- > Robust housing
- > Waterproof

---

# Contact Details

---

Visit [kingspanenergymanagement.com](http://kingspanenergymanagement.com) to learn more about our products and services in over 80 countries. For local information on the Large Scale Storage Solutions please contact:

**UK**

E: [tankinfo@kingspan.co.uk](mailto:tankinfo@kingspan.co.uk)  
Tel: +44 (0) 28 3836 4444

**Ireland**

E: [tankinfo@kingspan.ie](mailto:tankinfo@kingspan.ie)  
Tel: +353 42 969 0022

**Netherlands**

E: [info@kingspan-env.nl](mailto:info@kingspan-env.nl)  
Tel: +31 344 760050

**Sweden**

E: [tank@kingspan.se](mailto:tank@kingspan.se)  
Tel: +48 61 660 94 46

**Poland**

E: [zbiorniki@kingspan.pl](mailto:zbiorniki@kingspan.pl)  
Tel: +48 61 814 44 00

**New Zealand**

E: [tankinfo@kingspan.co.nz](mailto:tankinfo@kingspan.co.nz)  
Tel: +44 (0) 28 3836 4444

**North America**

E: [TalkToUs@kingspan.com](mailto:TalkToUs@kingspan.com)

**France**

E: [cuve@kingspan.fr](mailto:cuve@kingspan.fr)  
Tel: +33 9 75 18 76 49

**Belgium**

E: [info@kingspan-env.be](mailto:info@kingspan-env.be)  
Tel: +32 51 48 51 42

**Germany**

E: [tank@kingspan.de](mailto:tank@kingspan.de)  
Tel: +49 6102 3686700

**Czech Republic**

E: [nadrze@kingspan.cz](mailto:nadrze@kingspan.cz)  
Tel: +420 725 114 555

**Finland**

E: [tankinfo@kingspan.com](mailto:tankinfo@kingspan.com)  
Tel: +48 61 660 94 46

**Norway**

E: [tank@kingspan.no](mailto:tank@kingspan.no)  
Tel: +48 61 660 94 46

**Denmark**

E: [titan@kingspan.com](mailto:titan@kingspan.com)  
Tel: +48 61 660 94 46

**Middle East**

E: [tankinfo@kingspan.me](mailto:tankinfo@kingspan.me)  
Tel: +44 (0) 28 3836 4444

---

**Global Head Office**

180 Gilford Road  
Portadown  
Co. Armagh  
BT63 5LF United Kingdom  
Tel: +44 (0) 28 3836 4444

---

**European Office**

5 Topolowa St.  
62-090 Rokietnica  
Poland  
Tel: +48 61 814 44 00



**Kingspan Water & Energy manufacturing processes meet the restrictive ISO standards:**

- ISO 9001:2015 – Quality Management System
- ISO 14001:2015 – Environmental Management System
- ISO 37301:2021 – Compliance Management System
- ISO 45001:2018 – Occupational Health and Safety Management System

Follow Kingspan Water & Energy on:



[@KingspanWaterandEnergy](https://www.facebook.com/KingspanWaterandEnergy)



[@TheKingspanEnv](https://www.youtube.com/TheKingspanEnv)



[@kingspanwaterenergy](https://www.linkedin.com/company/kingspanwaterenergy)



Download  
the leaflet  
in electronic  
version

[kingspanenergymanagement.com](http://kingspanenergymanagement.com)

We take every care to ensure that the information in this document is accurate at the point of publication. Specification may vary (within a small parameter) due to manufacturing process variations or environmental conditions. All images are for illustration purposes only and should not be taken as binding. The actual product may vary, and specification/ dimensions/colour/other attributes may differ.

To ensure you are viewing the most recent and accurate product information, please visit [kingspan.com](http://kingspan.com).

©Kingspan and the Lion Device are Registered Trademarks of the Kingspan Group plc in the UK, Ireland and other countries. All rights reserved.

Registered Office: 180 Gilford Road, Portadown, Co. Armagh, BT63 5LF. VAT GB412 5124 03.

European Office: 5 Topolowa St., 62-090 Rokietnica, Poland. VAT PL779 20 57 260.

v1.04.2023

